

The background is a solid orange color with a pattern of white line-art icons. The icons include: two hands holding a heart, a house with a heart inside, a single drop, three test tubes, a stethoscope, a clipboard with a plus sign, a bowl of fruit, a person in a yoga pose, a thermometer, a sleeping person, a heart with an ECG line, another clipboard with a plus sign, another stethoscope, and a heart held by two hands. At the bottom, there are partial icons of a pill bottle and two people.

# 3

## Provider Support Resources

**“I’ve been a hepatology nurse for 16 years and have never had so many hugs and happy tears from patients now that we can cure people easily and safely”**

**– Margaret, Clinical Nurse Consultant**

## Provider Support Resources

We know that hepatitis C is new to many treatment providers in primary care given it has been managed solely by specialists in the past. Here are some great resources that will give you the confidence to prescribe DAAs to treat and cure hepatitis C:



**Australian Recommendations for management of hepatitis C**



**How to access FibroScan®**



**Additional clinical decision support resources**



**How to get specialist support**



**Introduction to HealthPathways**



**Online and face-to-face training and education opportunities**

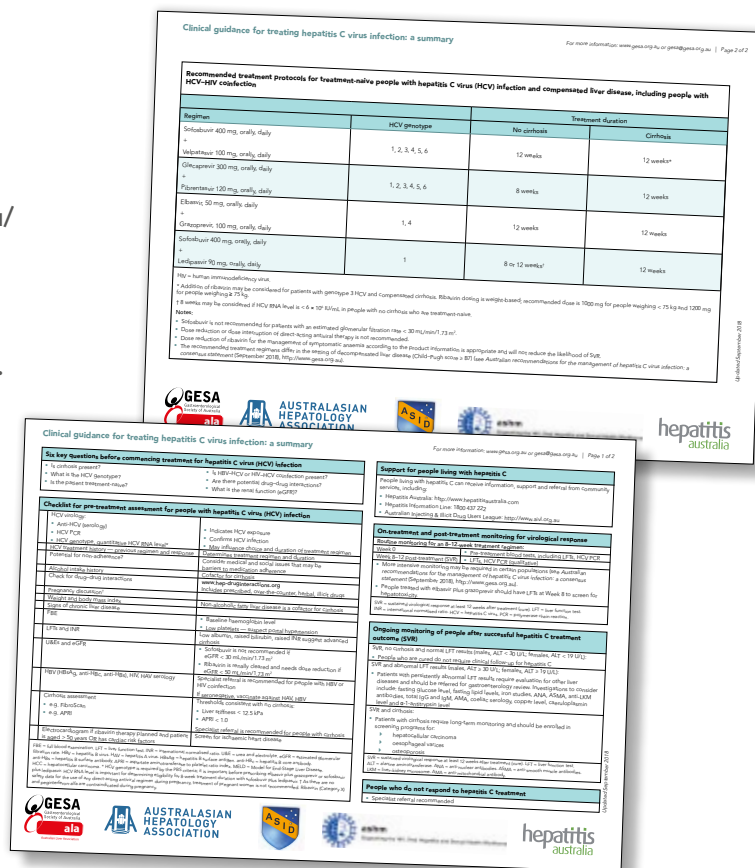


## Australian Recommendations for management of hepatitis C

*The Australian recommendations for the management of hepatitis C virus infection: a consensus statement summarises everything you need to know about hepatitis C. It is regularly updated, so keep an eye out for the latest version online at [hepcguidelines.org.au/](http://hepcguidelines.org.au/)*

There is a tear-out of the summary version:  
*Clinical guidance for treating hepatitis C virus infection: a summary* in the Appendix booklet.

Used with permission of the Gastroenterological Society of Australia (GESA).



The Primary Care Consultation Request forms were developed to streamline access to specialist advice, in particular to meet requirements for 'in consultation' prescribing by GPs not yet experienced in managing hepatitis C. You can fax the forms to specialist clinics where they will be reviewed and responded to by an appropriate physician, usually within one week. The physician will recommend a course of action, which is either: more information required; GP is able to prescribe; or specialist referral recommended. This process may also be used by nurse practitioners.

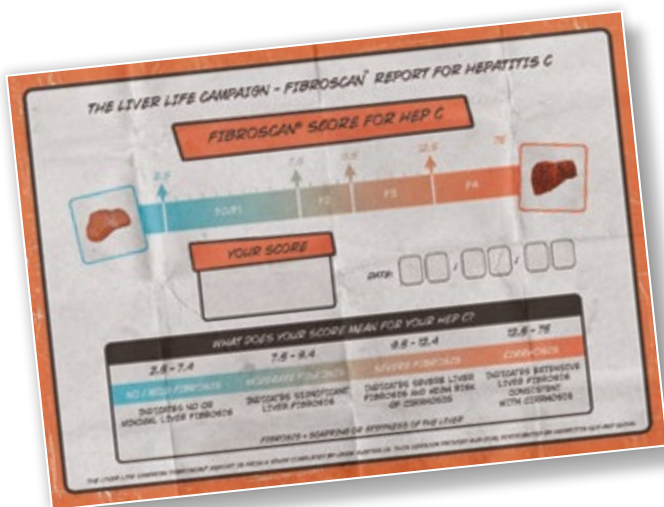
Primary Care Consultation Request forms are available as a generic form as part of this Toolkit (see the Appendix booklet), online from GESA, and as a form specific to your area from your local HealthPathways.

[illegible]

If you don't know to which specialist clinic you should be sending your Primary Care Consultation Request form, look for your closest hospital on the clinic finder on the **Hep C Help website: [hepchelp.org.au/clinic.php](http://hepchelp.org.au/clinic.php)**, or call the Hepatitis Infoline on 1800 703 003.

Used with permission of the Gastroenterological Society of Australia (GESA).

## Accessing FibroScan®



FibroScan® (transient elastography – TE) is a non-invasive alternative to a liver biopsy. It can be used to assess the degree of liver fibrosis and exclude advanced liver disease. FibroScan® is not Medicare Benefits Schedule (MBS) subsidised and needs to be performed by a trained operator.

Results from FibroScan® need to be interpreted with other clinical information by a trained operator who is experienced in hepatitis C care.

The FibroScan® report pad for hepatitis C can help you explain the result to your client. You can access a PDF version here: [bit.ly/fibroscan\\_scoresheet](http://bit.ly/fibroscan_scoresheet)

Access to FibroScan® can be facilitated through tertiary hospital services, including via community outreach integrated hepatitis nurses, or specialist liver clinics.

EC Partnership can also help you get access to a FibroScan® for your patients - contact the EC Nurse Coordinator for assistance.

You can also refer your patient to have a FibroScan® at a hospital liver clinic by using this generic referral form and faxing it to the appropriate hospital. You may want to call ahead to ask how long the waitlist is.

The referral form is available as a template for Best Practice, Medical Director and Zedmed on St Vincent's website here: [bit.ly/fibroscan\\_referral\\_form](http://bit.ly/fibroscan_referral_form) under 'Useful Forms' or from your EC nurse.

FibroScan® Referral	
Alfred Hospital Liver Clinic (Gastroenterology)	Fax: (03) 9076 2194
Alfred Hospital Infectious Diseases	Fax: (03) 9076 6528
Austin Health Liver	Fax: (03) 9496 2097
Box Hill Hospital Liver and Hepatitis Clinics	Fax: (03) 9695 4852
St Vincent's Hospital Melbourne Liver & Hepatitis Clinic	Fax: (03) 9231 3590
The Royal Melbourne Hospital Liver Clinic	Fax: (03) 9342 7848
Victorian Infectious Diseases Service - Infectious Hepatitis Clinic	Fax: (03) 9342 7277
Western Health Hepatitis Clinic	Fax: (03) 8345 7212
<b>PATIENT DETAILS</b>	
Patient Name:	UR No (if Known):
Patient's Date of Birth:	Gender:
Patient's Address:	
Patient's Phone: Home:	Mobile:
<b>Liver Biopsy</b> <input type="checkbox"/> Yes <input type="checkbox"/> No	
Date:	
Fibrosis Stage: <input type="checkbox"/> 0 <input type="checkbox"/> 1 <input type="checkbox"/> 2 <input type="checkbox"/> 3 <input type="checkbox"/> 4	
Inflammatory Grade: <input type="checkbox"/> 0 <input type="checkbox"/> 1 <input type="checkbox"/> 2 <input type="checkbox"/> 3 <input type="checkbox"/> 4	
Previous FibroScan®: <input type="checkbox"/> Yes <input type="checkbox"/> No	Number of scans:
Date:	
Result:	
<b>Liver Function</b> <input type="checkbox"/> Yes <input type="checkbox"/> No	
Date:	
Total Protein: g/L	Albumin: g/L
ALT: xxx g/L	Bilirubin: µmol/L
GGT: U/L	ALP: U/L
<b>Haematology</b>	
Haemoglobin: g/L	
Platelets: 10 <sup>9</sup> /L	
INR:	
<b>Comorbidities</b>	
<input type="checkbox"/> Hepatitis B	<input type="checkbox"/> HIV
<input type="checkbox"/> Hepatitis C	<input type="checkbox"/> NASH
<input type="checkbox"/> Alcohol	<input type="checkbox"/> IDDM/NIDDM
<input type="checkbox"/> Cystic Fibrosis	<input type="checkbox"/> Other
<b>Clinical Assessment of Liver Scanning</b>	
<input type="checkbox"/> No / Minimal (F0-1)	
<input type="checkbox"/> Moderate (F2-3)	
<input type="checkbox"/> Severe / Cirrhosis (F4)	
Fasting >2hrs: <input type="checkbox"/> Yes <input type="checkbox"/> No	
Clinical Notes:	

---

## Additional clinical decision support resources - to make Hep C treatment easy

We've collated some very useful clinical decision support tools to make it easier for you to treat hepatitis C.

### Format available in

### Material

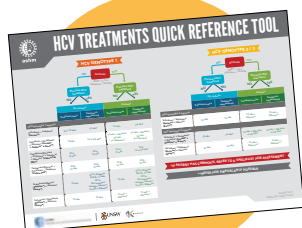
### Produced by & order information

Two-page pdf

HCV Treatments Quick Reference Tool

ASHM

Available online  
[bit.ly/ashm\\_hcvrxquickref](http://bit.ly/ashm_hcvrxquickref)



Website

Drug-Drug Interaction Checker

University of Liverpool

Available online  
[hep-druginteractions.org/](http://hep-druginteractions.org/)



Website

APRI Calculator

University of Washington

Available online  
[bit.ly/hepconline\\_apricalc](http://bit.ly/hepconline_apricalc)

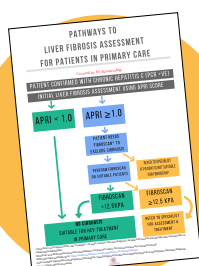


PDF or laminated A4 poster

Pathways to Liver Fibrosis Assessment for Patients in Primary Care

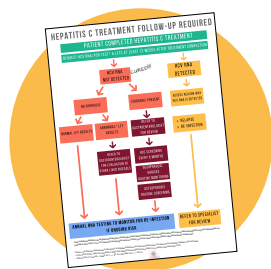
EC Partnership

Available online  
[ecpartnership.org.au/resources](http://ecpartnership.org.au/resources)



## Format available in

PDF or laminated A4 poster



## Material

Hepatitis C Treatment  
Follow-up Required

## Produced by & order information

**EC Partnership**

[ecpartnership@burnet.edu.au](mailto:ecpartnership@burnet.edu.au)

Available online:

[ecpartnership.org.au/resources](http://ecpartnership.org.au/resources)

Three-page document



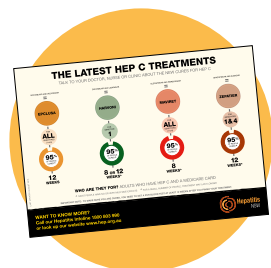
Hepatitis C management and  
support for general practitioners  
– frequently

**Victorian State Government**

Available online

[bit.ly/dhhs\\_nsplacements](http://bit.ly/dhhs_nsplacements)

Chart



Current hep C treatments chart

**Hepatitis NSW**

Available online

[bit.ly/hepnsw\\_hcvrxchart](http://bit.ly/hepnsw_hcvrxchart)

# How to get specialist support

You can get specialist support using the *Primary Care Consultation Request forms*. These forms can help you get advice about a specific patient, or to refer your patient to see a specialist. The forms also make sure you supply the key information a specialist needs to review your patient. Specialist support can be sought through the form for inexperienced providers requiring consultation with a specialist to fulfill PBS requirements or for seeking advice for treating complicated patients.

Patients who require specialist care include those with:<sup>13</sup>

- ☒ Advanced fibrosis or cirrhosis
- ☒ Extrahepatic manifestations
- ☒ Complex co-morbidities
- ☒ Renal impairment
- ☒ HCV-HIV co-infection
- ☒ HCV-HBV co-infection
- ☒ First-line DAA treatment failure
- ☒ Complex drug–drug interactions
- ☒ Experience of major adverse events during treatment
- ☒ Persistently abnormal LFTs post-treatment

---

<sup>13</sup> Adapted from GESA Australian recommendations for the management of hepatitis C virus: a consensus statement (August 2017)



## HealthPathways

HealthPathways is a free, web-based portal with relevant and evidence-based information on the assessment and management of common clinical conditions, including referral guidance that has been developed by Primary Health Networks (PHNs) in consultation with relevant clinical providers.

The hepatitis C page on the HealthPathways portal gives you a detailed overview of chronic hepatitis C management, along with local referral options and links to Primary Care Consultation Request forms.



---

*Visit your local PHN's HealthPathways website and set up a free account to access the portal.*

---

### *Eastern Melbourne and North Western Melbourne PHN:*



[melbourne.healthpathways.org.au](http://melbourne.healthpathways.org.au)

### *Murray PHN:*



[murray.healthpathways.org.au](http://murray.healthpathways.org.au)

### *Gippsland PHN:*



[gippsland.healthpathways.org.au](http://gippsland.healthpathways.org.au)

### *South Eastern Melbourne PHN:*



[semphn.org.au/resources/pathways](http://semphn.org.au/resources/pathways)

### *Western Victoria PHN:*



[westvic.healthpathways.org.au](http://westvic.healthpathways.org.au)



## Getting online and face-to-face training

The BBV/STI Education and Events calendar makes it easy to find the most relevant training and education opportunities, all in one place: [bbvsti.vphna.org.au/](http://bbvsti.vphna.org.au/)

### Online Learning

Name	Organisation	Where to access	Time required	CPD points
<b>Curing hepatitis C: Your role as a GP</b>	Victorian PHN alliance	<a href="http://vphna.org.au/education/">vphna.org.au/education/</a>	45 minutes	2 RACGP points
<b>Hepatitis C in Drug and Alcohol Settings</b>	ASHM	<a href="http://lms.ashm.org.au/">lms.ashm.org.au/</a>	80 minutes (4 modules of 20 minutes)	40 Category 1 points under the RACGP QI & CPD <b>only if combined with face to face workshop</b>
<b>Hepatitis Education Project - Hepatitis C</b>	Edith Cowan University	<a href="http://hepatitis.ecu.edu.au">hepatitis.ecu.edu.au</a>	7 hours	40 Category 1 CPD points for GPs, 9 hours of CPD for nurses
<b>Managing hepatitis C in primary care</b>	NPS Medicinewise	<a href="http://nps.org.au/cpd/activities/managing-hepatitis-c-in-primary-care">nps.org.au/cpd/activities/managing-hepatitis-c-in-primary-care</a>	60 minutes	2 RACGP or ACCRM points
<b>Hepatitis C: your role as a primary care nurse</b>	Victorian PHN Alliance	<a href="http://vphna.org.au/education/">vphna.org.au/education/</a>	45 minutes	N/A

## Face-to-face Learning

Organisation	Description of training	Find out more
<b>The Victorian HIV and Hepatitis Integrated Training and Learning (VHHITAL) program</b>	VHHITAL delivers comprehensive education and training for GPs for the diagnosis, treatment and management of HIV, hepatitis B, hepatitis C and sexually transmissible infections. Most training sessions are for prescribers only, but some sessions are available for nurses.	<b>Website:</b> <a href="http://nwmphn.org.au/vhhital">nwmphn.org.au/vhhital</a> <b>Contact:</b> 03 9347 1188 <a href="mailto:vhhital@nwmphn.org.au">vhhital@nwmphn.org.au</a>
<b>The Victorian Viral Hepatitis Education – St Vincent's Hospital</b>	Tailored education in your workplace around Victoria provided by experienced Registered Nurse. It's funded by Department of Health and Human Services at no cost to participants.	<b>Contact:</b> Gabrielle Bennett <a href="mailto:gabrielle.bennett@svha.org.au">gabrielle.bennett@svha.org.au</a> 03 9288 3586 0407865140
<b>Harm Reduction Victoria</b>	Harm Reduction Victoria provides training for people who use drugs and for the people who work with and for people who use drugs. Training on blood borne viruses, safer drug use, safer injecting and vein care and practical strategies for reducing stigma and discrimination is available.	<b>Website:</b> <a href="http://hrvic.org/training">hrvic.org/training</a> Jane Dicka <a href="mailto:janed@hrvic.org.au">janed@hrvic.org.au</a>
<b>Hepatitis Victoria</b>	HEPReady has two courses – Essentials and Comprehensive – aimed at practice nurses, mental health nurses, social workers, AOD workers, youth workers and pharmacists. They cover clinical information of viral hepatitis, lived experience and how to talk about viral hepatitis.	<b>Website:</b> <a href="http://bit.ly/hepvic_hepready">bit.ly/hepvic_hepready</a> <b>Contact:</b> <a href="mailto:hepready@hepvic.org.au">hepready@hepvic.org.au</a> 03 9380 4644
<b>Victorian Aboriginal Community Controlled Health organisation</b>	Aboriginal Health Worker Training and a range of short courses including cultural safety training.	<b>Website:</b> <a href="http://vaccho.org.au/educational/">vaccho.org.au/educational/</a> <b>Contact:</b> <a href="mailto:training@vaccho.org.au">training@vaccho.org.au</a>
<b>The Penington Institute</b>	Community Overdose Prevention Education (COPE) program works with organisations whose clients include people who use opioids or people who may witness an overdose, e.g. AOD workers, social workers	<b>Website:</b> <a href="http://bit.ly/penington_copetraining">bit.ly/penington_copetraining</a> <b>Contact:</b> 03 9650 0699 <a href="mailto:info@penington.org.au">info@penington.org.au</a>